

# CLASS – 11

## PSYCHOLOGY

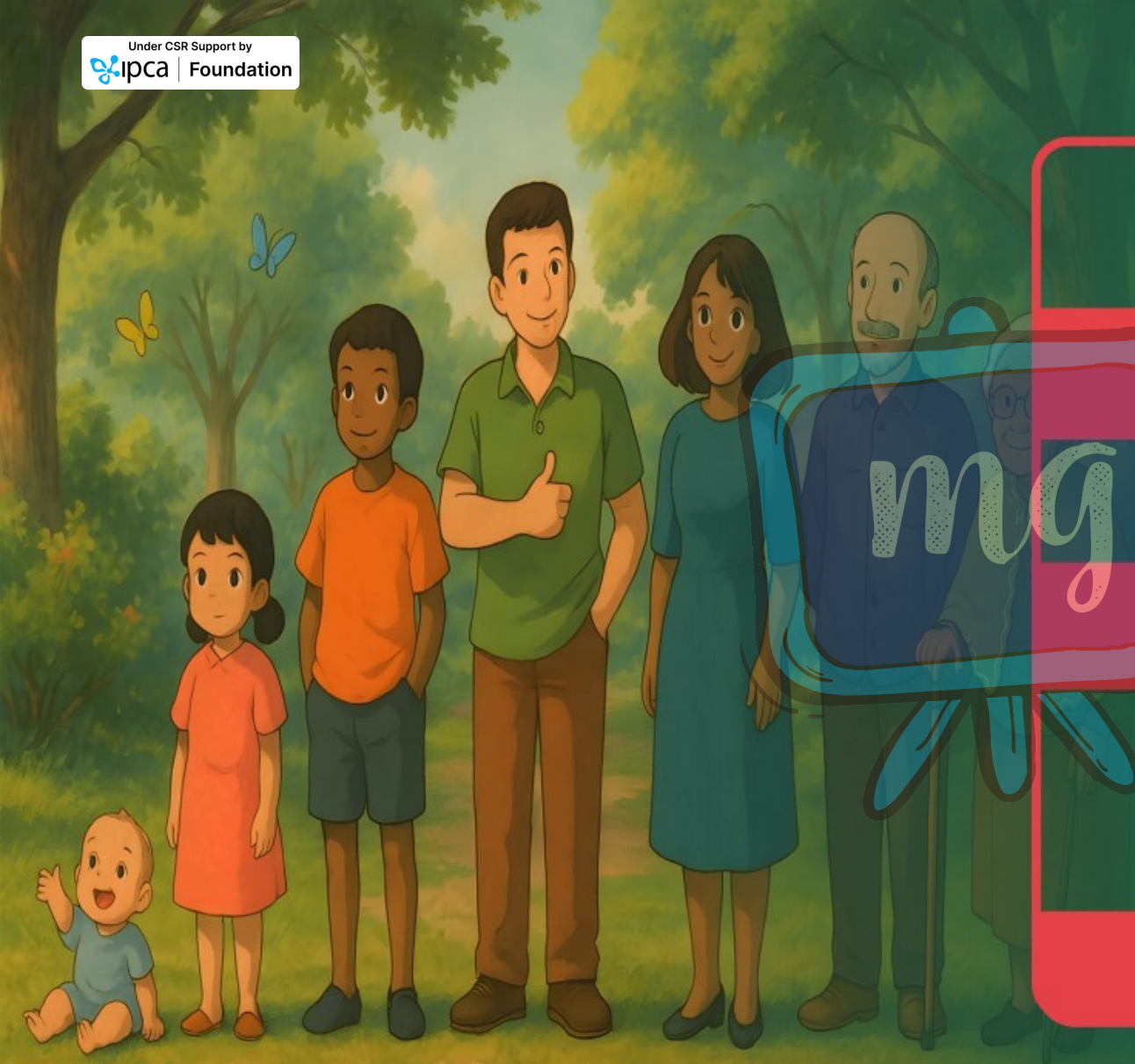
### Chapter – 3

### Human Development

#### Part – 1

#### Introduction

Sonal Koul





1. Introduction

2. Life Span Perspective

3. Factors Influencing Development

4. Context of Development

5. Brief of Developmental Stages

6. Prenatal Stage

7. Infancy and Childhood

8. Adolescence

9. Adulthood and Old Age

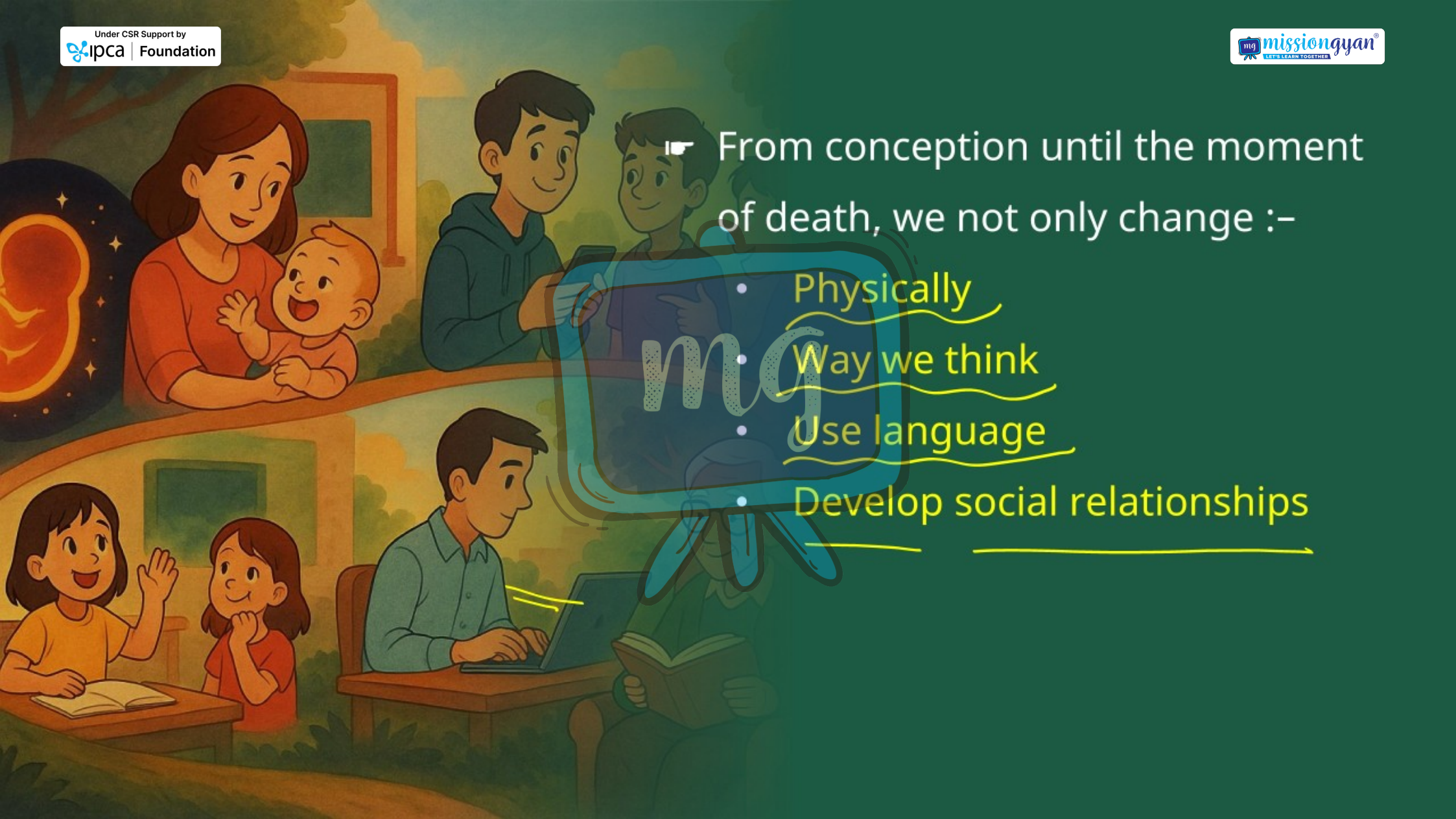
# MEANING OF DEVELOPMENT?

Development is the POP pattern of  
progressive, orderly and predictable  
changes that begin at conception and  
continue throughout life.

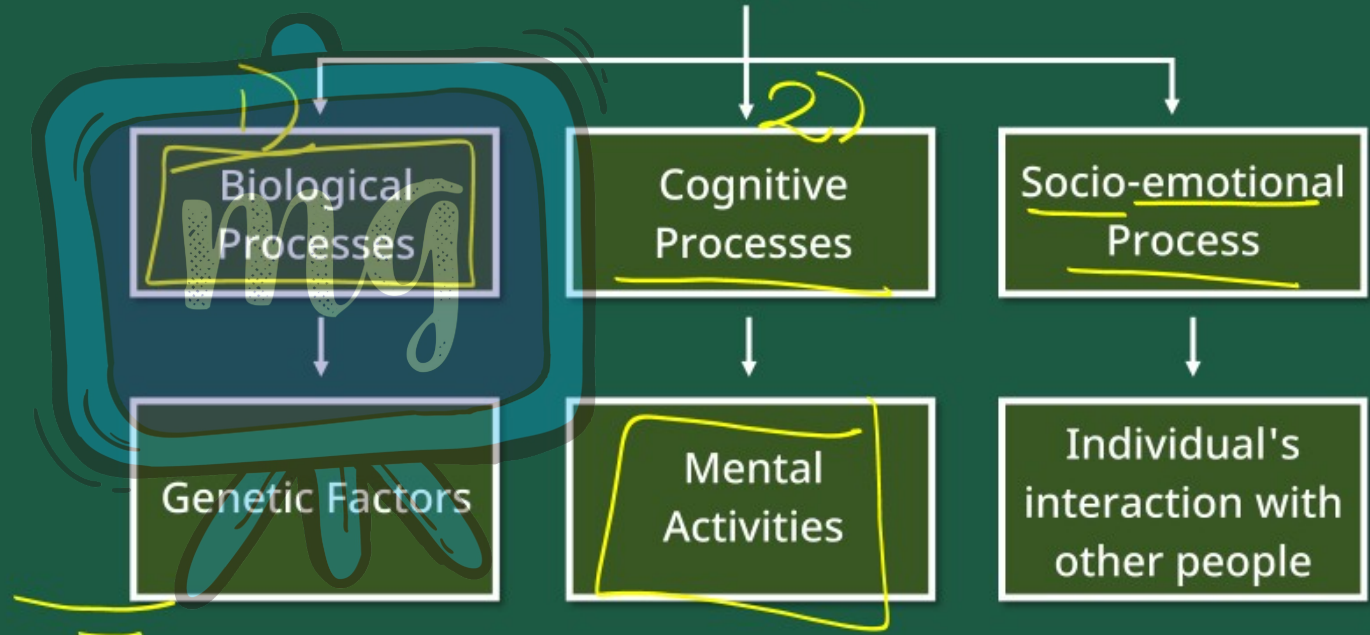


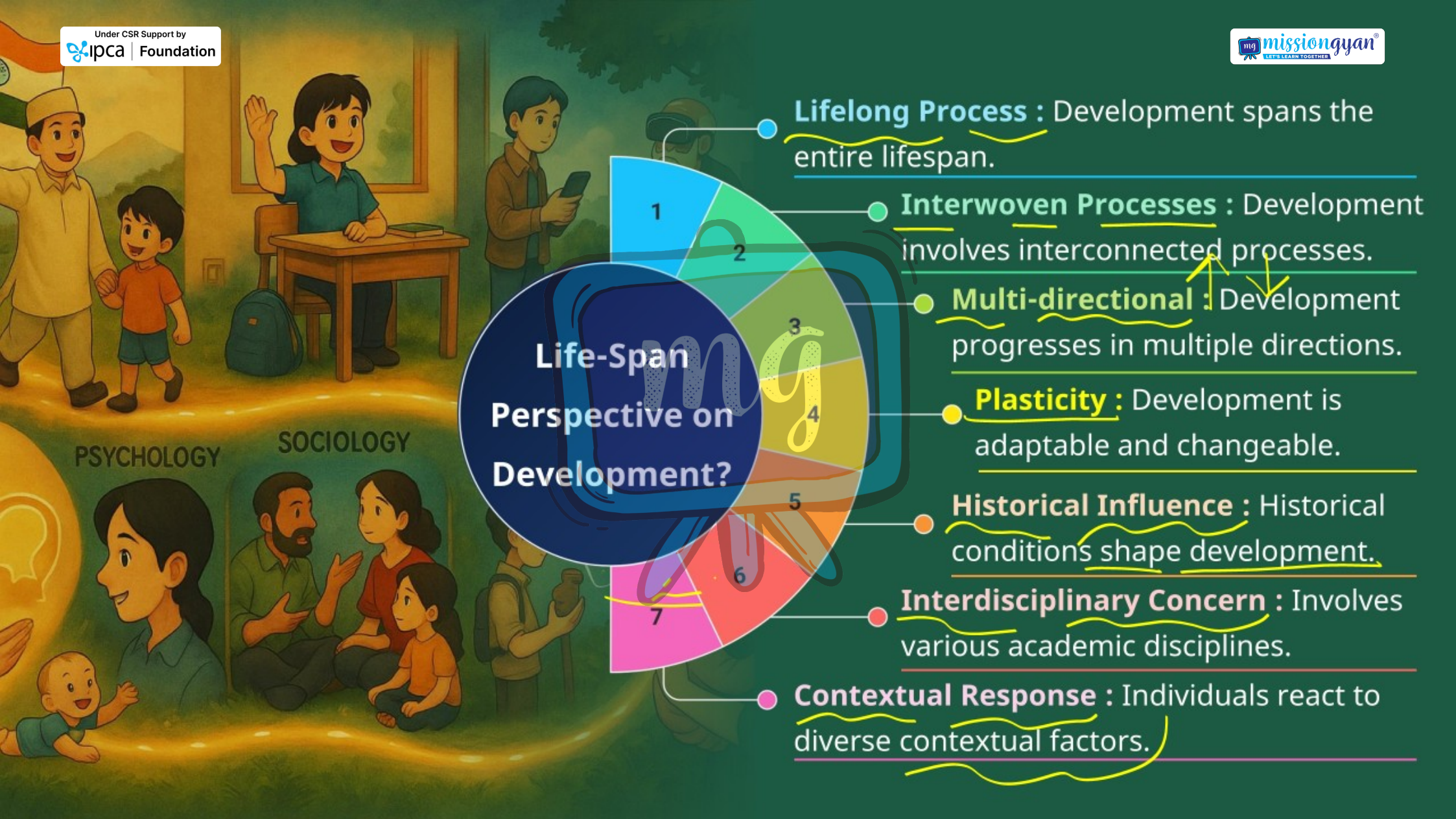
From conception until the moment of death, we not only change :-

- Physically
- Way we think
- Use language
- Develop social relationships



## Development is Influenced by an Interplay of





## Life-Span Perspective on Development?

1 **Lifelong Process** : Development spans the entire lifespan.

2 **Interwoven Processes** : Development involves interconnected processes.

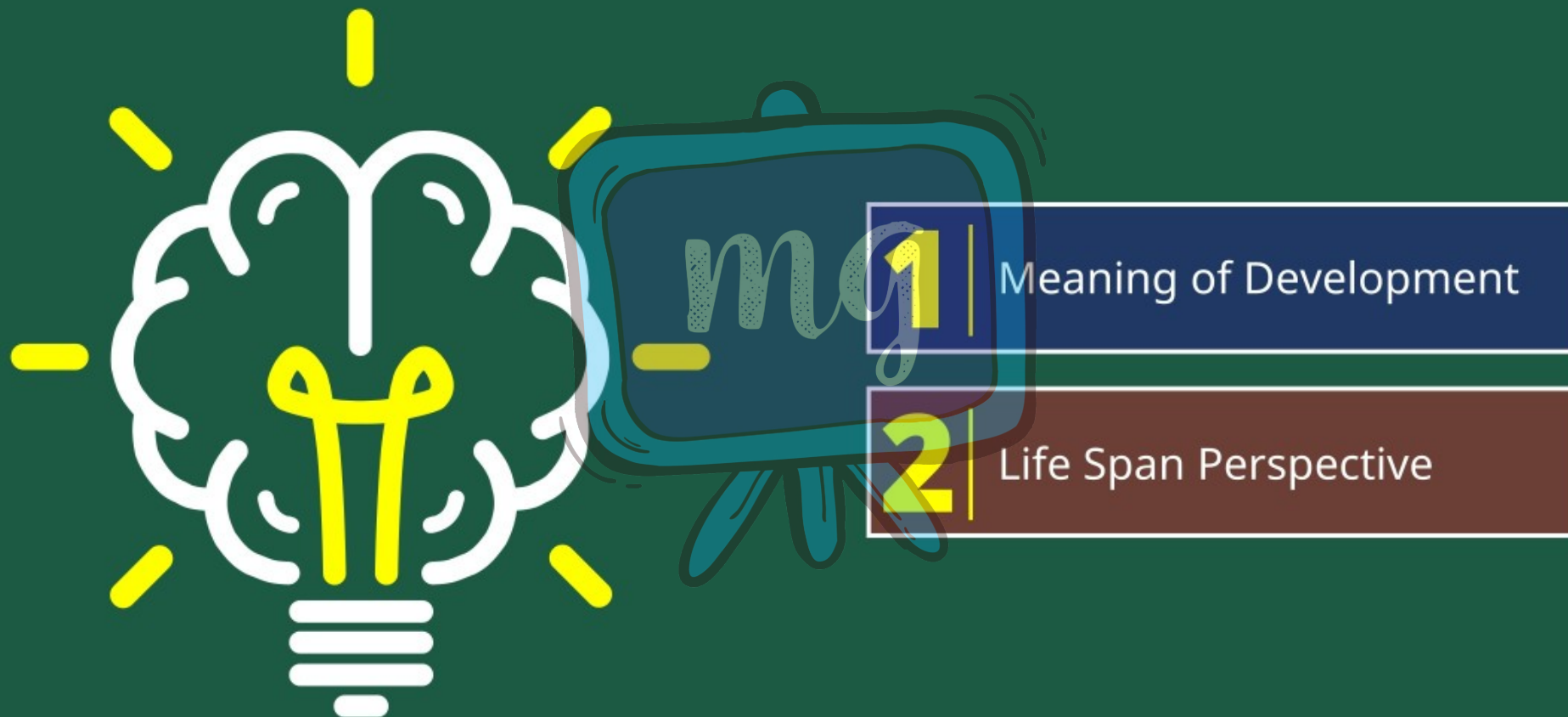
3 **Multi-directional** : Development progresses in multiple directions.

4 **Plasticity** : Development is adaptable and changeable.

5 **Historical Influence** : Historical conditions shape development.

6 **Interdisciplinary Concern** : Involves various academic disciplines.

7 **Contextual Response** : Individuals react to diverse contextual factors.



\_\_\_\_\_ processes that influence development refer to changes in an individual's interactions with other people.

A

Cognitive

B

Cultural

C

Socio-emotional

D

None of the above

2

Development is multi directional.

A	True
B	False

A)