



CLASS – 11

PSYCHOLOGY

Chapter – 2

Methods of Enquiry in Psychology

Part – 1

Psychological Research

Sonal Koul

An illustration of a young woman with dark hair, wearing a green sweater, sitting at a desk in a library. She is looking thoughtful, with her hand on her chin. On the desk is an open notebook and a pen. In the background, there are bookshelves filled with books. Floating around her are several icons: a brain, a magnifying glass, test tubes in a rack, a document, and a calculator. A large, stylized 'mg' logo is overlaid on the right side of the image.

1. Goals of Psychological Enquiry

2. Steps in Conducting Research

3. Nature of Psychological Data

4. Methods of Enquiry

5. Psychological Testing

6. Analysis of Data

7. Limitations of Psychological Enquiry

8. Ethical Issues

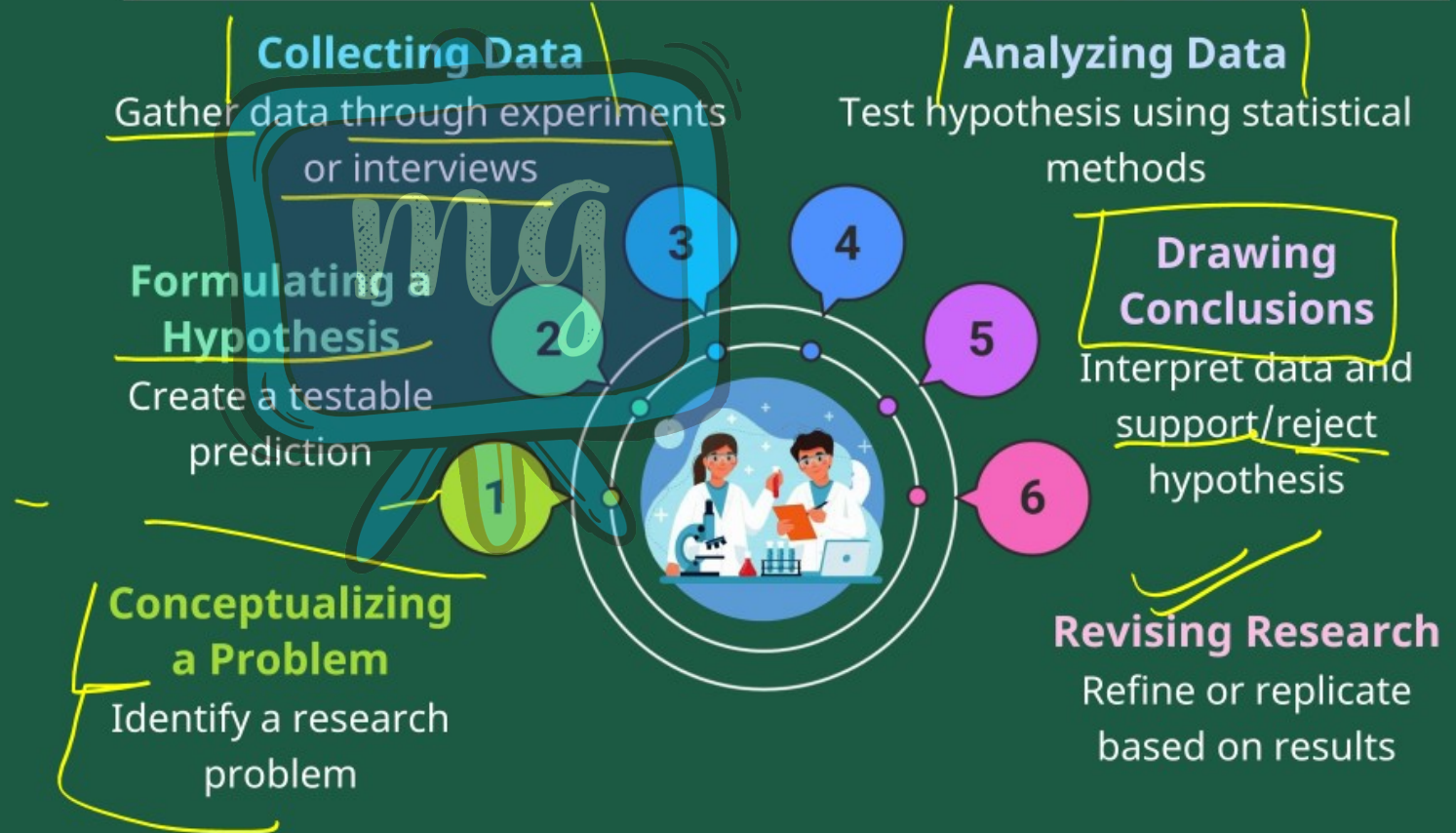
GOALS OF PSYCHOLOGICAL ENQUIRY

Psychological
Enquiry
Aims to

- **Describe** behavior objectively & systematically. *STUDY HABITS*
- **Predict** future behavior based on observations. *A+*
- **Explain** causes of behavior. *C/D*
- **Control** behavior (modify it).
- **Apply** psychological knowledge for improving quality of life.

1) OBJECTIVE 2) SYSTEMATIC

STEPS IN CONDUCTING SCIENTIFIC RESEARCH

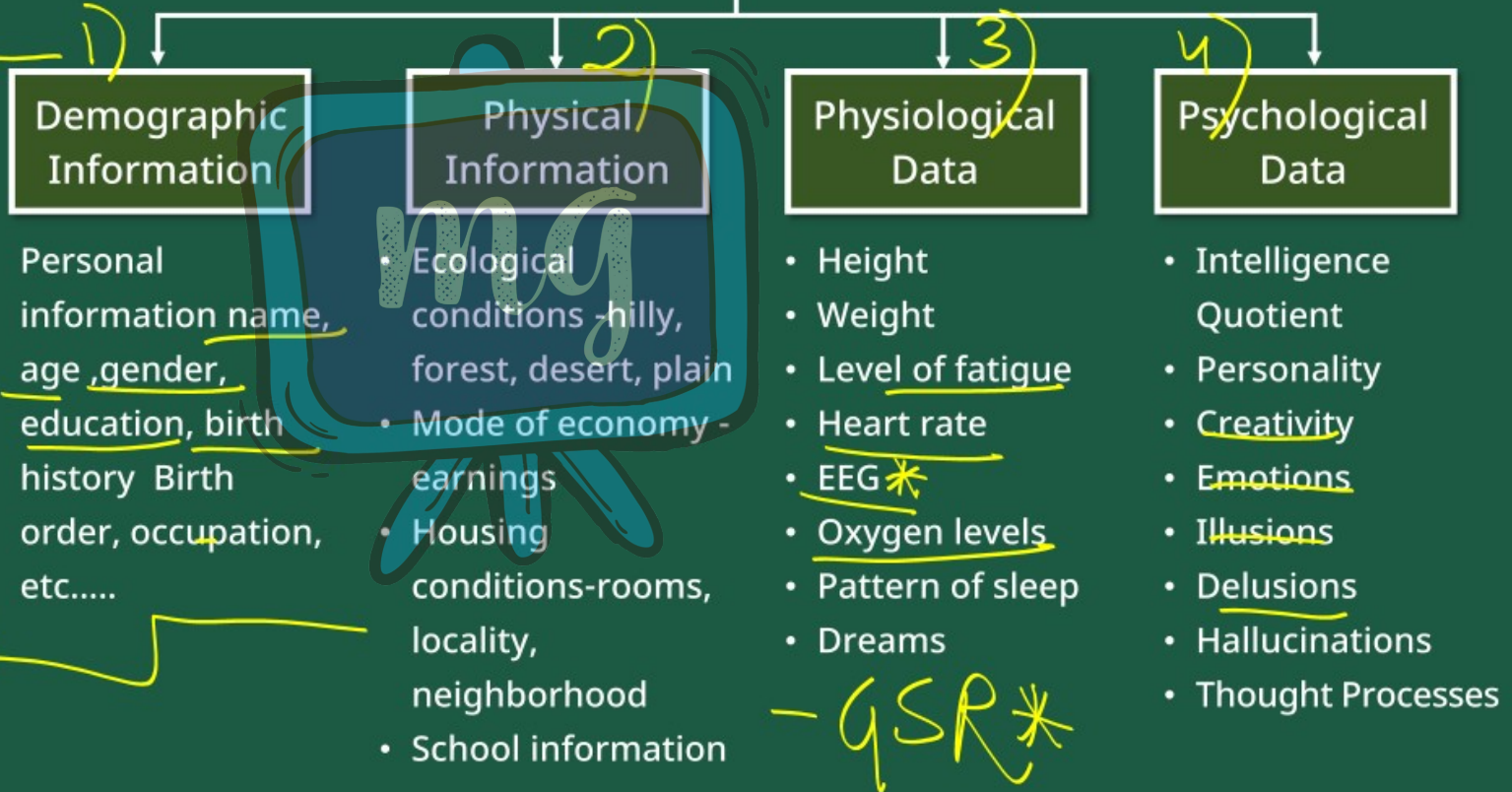


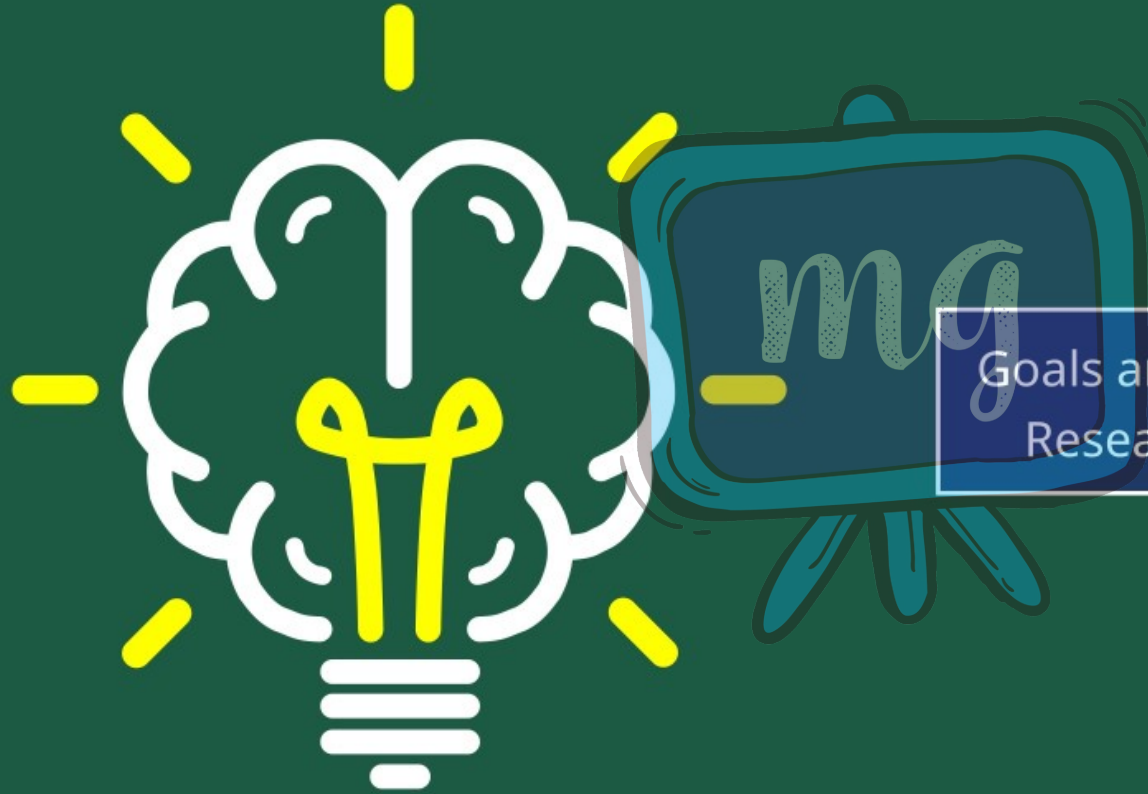
NATURE OF PSYCHOLOGICAL DATA

Data are pieces of information collected during research.



Types of Data





Goals and Steps of Psychological
Research Psychological Data

1

Height and weight falls under_____.

- ☐ A Physical information
- ☐ B Psychological data
- ☐ C Physiological data
- ☐ D None of the above

2 | The second step in psychological research is hypothesis formulation.

A	True
B	False

A