

CLASS – 10

ENGLISH

First Flight

Poem : The Trees

Part – 1

Explanation

ARPITA SHARMA



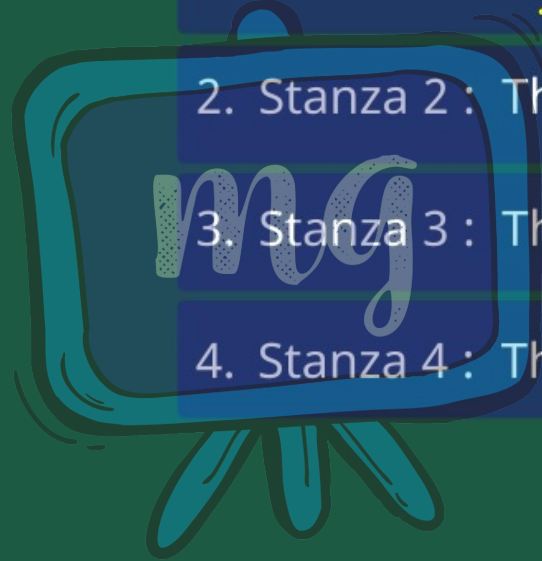
OVERVIEW

1. Stanza 1 : The Imprisoned Forest

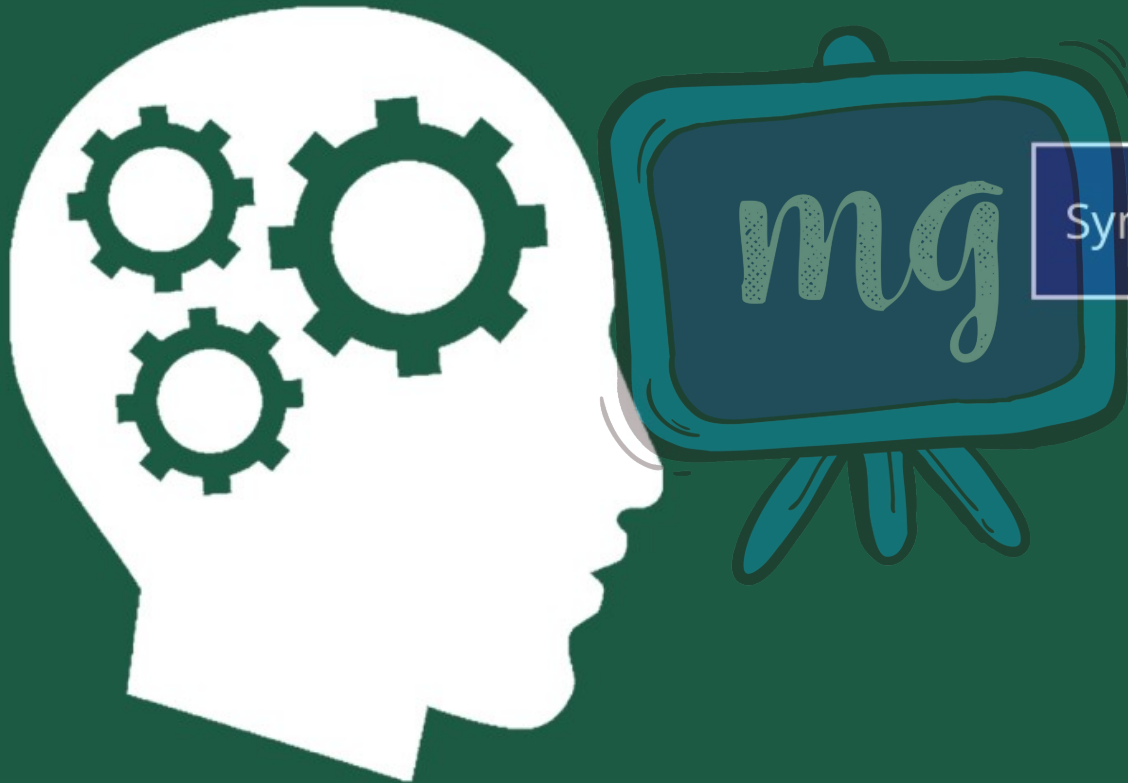
2. Stanza 2 : The Great Escape

3. Stanza 3 : The Poet's Perspective

4. Stanza 4 : The Climax



COMPETENCY BASED LEARNING



Symbolism and Metaphor



Adrienne Rich was born in Baltimore, Maryland, U.S.A. in 1929. She is the author of nearly twenty volumes of poetry, and has been called a feminist and a radical poet.

"The Trees" is a metaphor which compares the trees to women. The poetess highlights the desire of women to be free and go out in the open.

BEFORE YOU READ

Can there be a forest without trees?

Where are the trees in this poem,
and where do they go?

Trees
Women
Deforestation



home

The trees inside are moving out into the
forest,

the forest that was empty all these days
where no bird could sit
no insect hide

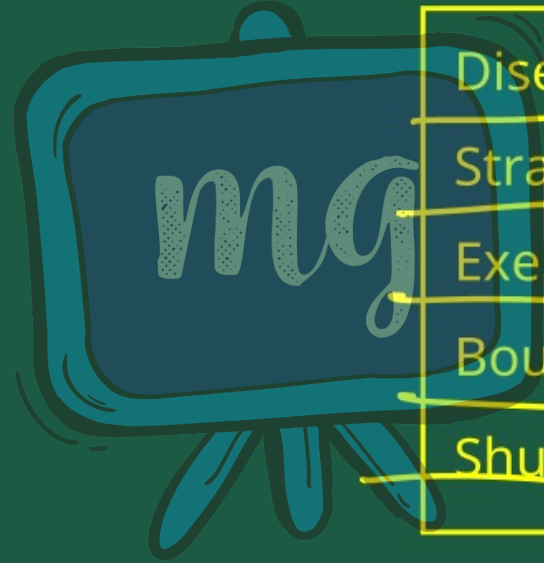
no sun bury its feet in shadow

the forest that was empty all these nights
will be full of trees by morning.

Bury : दफ़नाना (जमीन में)

All night the roots work
to disengage themselves from the
cracks अलग
in the veranda floor.

The leaves strain toward the glass,
small twigs stiff with exertion
long-cramped boughs shuffling under
the roof
like newly discharged patients
half-dazed, moving
to the clinic doors.



Disengage : अलग करना

Strain : दबाव डालना

Exertion : थकान

Boughs : शाखाएं

Shuffling : हिलना

Rich

I sit inside, doors open to the veranda
writing long letters

in which I scarcely mention the departure
of the forest from the house.

The night is fresh, the whole moon shines
in a sky still open

the smell of leaves and lichen,
still reaches like a voice into the rooms.

Scarcely	:	नहीं के बराबर
Lichen	:	काई

My head is full of whispers
which tomorrow will be silent.

Listen. The glass is breaking.

The trees are **stumbling** forward
into the night. Winds rush to meet
them.

The moon is broken like a mirror,
its pieces **flash** now in the **crown**
of the tallest oak.

Stumbling : लड़खड़ाना

Flash : चमकना

LEARNING OUTCOMES

1 | Trees Symbolise Womanhood

2 | The Power of Nature and The
Importance to Preserve It

ASSESSMENT



1

What is the poetess doing?

A

Watching trees

B

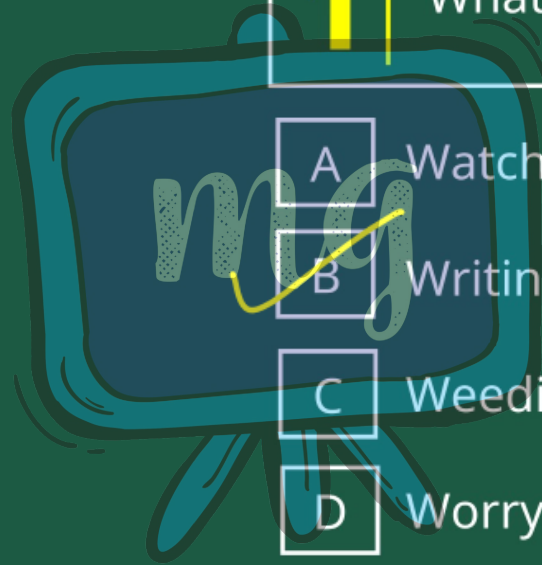
Writing long letters

C

Weeding

D

Worrying about deforestation





2

The word "boughs" mean

A

Seeds

B

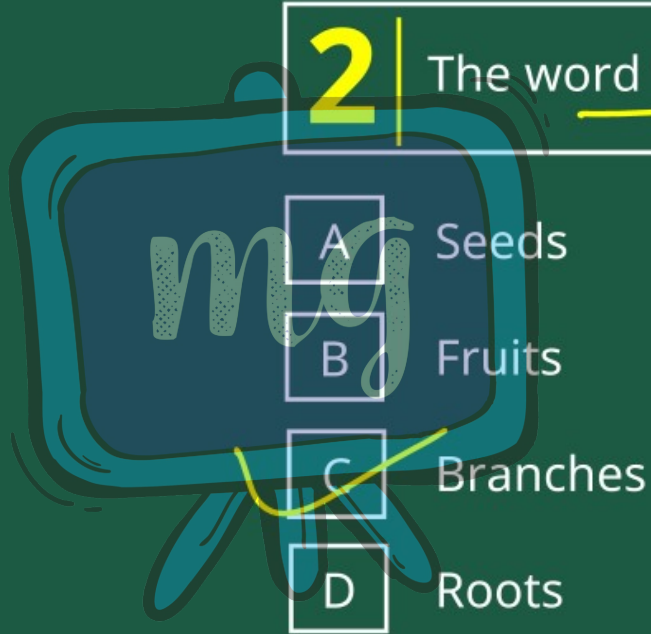
Fruits

C

Branches

D

Roots



ASSESSMENT



3

Name the literary device used in
"The moon is broken like a mirror,"

A

Metaphor

B

Simile

C

Alliteration

D

Imagery

'as'

ASSESSMENT

4

Name the poet of the poem "The trees"

A

Adrienne Rich

B

Robert Frost

C

Carolyn Wells

D

Walt Whitman