



CLASS – 10

ENGLISH

First Flight

Poem : The Trees

Part – 1

Explanation

KOMAL IETWANT

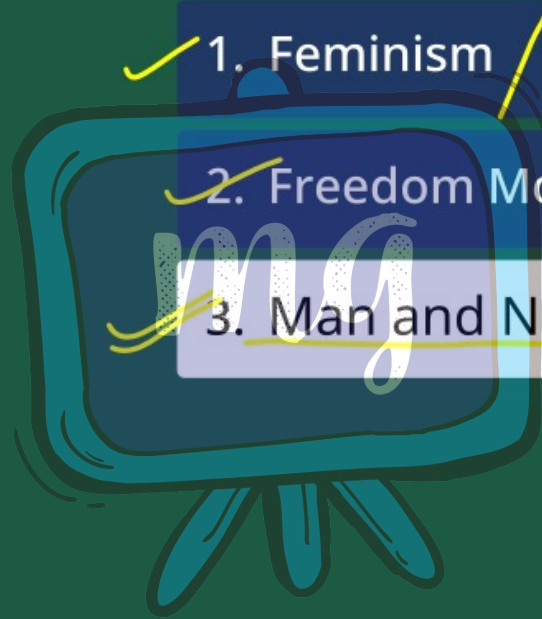
OVERVIEW

✓ 1. Feminism / *women emp.*

✓ 2. Freedom Movement

✓ 3. Man and Nature- Conflict

*h
i
i
y*



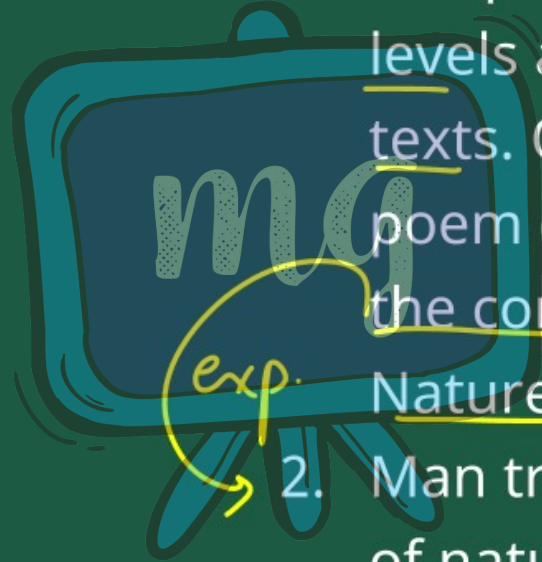


Adrienne Cecile Rich (May 16, 1929 – March 27, 2012) was an American poet, essayist.

She was called "one of the most widely read and influential poets of the second half of the 20th century"

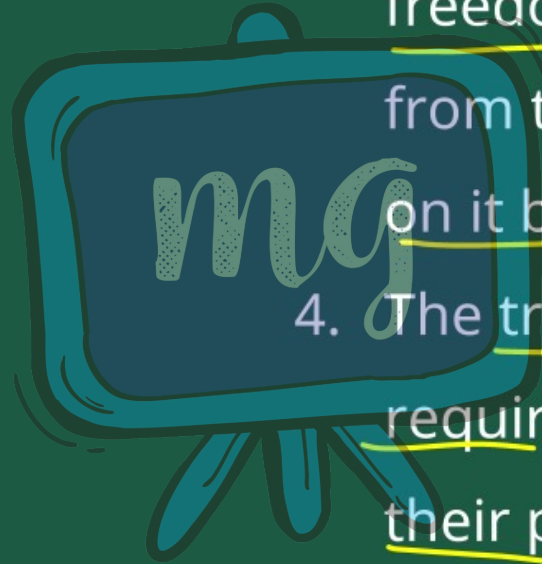
Theme

1. The poem can be read at various levels as it has a number of sub-texts. On the superficial level, the poem deals with the theme of the conflict between Man and Nature.
2. Man tries to curtail the freedom of nature by removing natural objects from their natural habitat and thus disturbs ecological balance.



3. Nature always strives for its freedom and tries to break free from the confinement imposed on it by human beings.

4. The trees, plants and animals require a free environment for their proper growth.



5. On a deeper level, the poem also



emphasizes the need of giving
freedom to people of all genders,

races and classes. Particularly, the
poem metaphorically emphasizes

the need of freedom for women

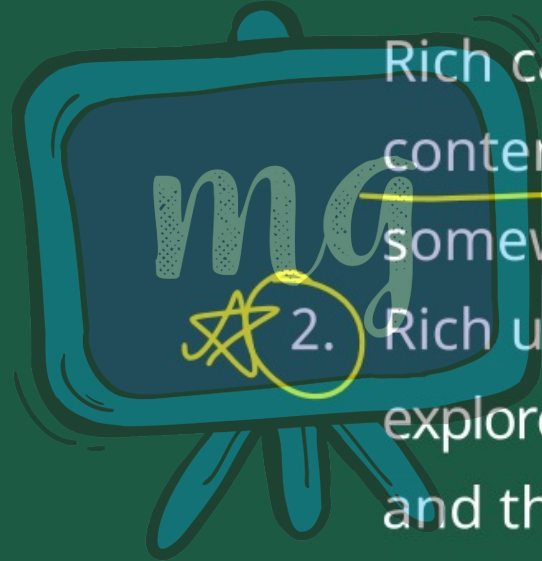
who have been subjugated to

slavery in the patriarchal society.



Tone

1. The tone of "The Trees" by Adrienne Rich can be interpreted as contemplative, reflective, and somewhat melancholic.
2. Rich uses the imagery of trees to explore themes of growth, change, and the passage of time, which evokes a sense of introspection and a deeper understanding of the complexities of life.



The trees inside are moving out into
the forest, *shade*
the forest that was empty all these *rebel*
days
where no bird could sit
no insect hide
no sun *bury* its feet in shadow
the forest that was empty all these
nights
will be full of trees by morning.

1. a verandah
2. a gigantic tree
3. roofed
symbolizes

Bury : Conceal/cover

All night the roots work
to disengage themselves from the

cracks
in the veranda floor.

The leaves strain toward the glass

Disengage : to detach

Strain : to put pressure

small twigs stiff with **exertion**

long-cramped **boughs** shuffling

under the roof

like newly discharged patients

half-dazed, moving

to the clinic doors.

Exertion : tired

Boughs : branches

Shuffling : to shift

I sit inside, doors open to the

veranda

women

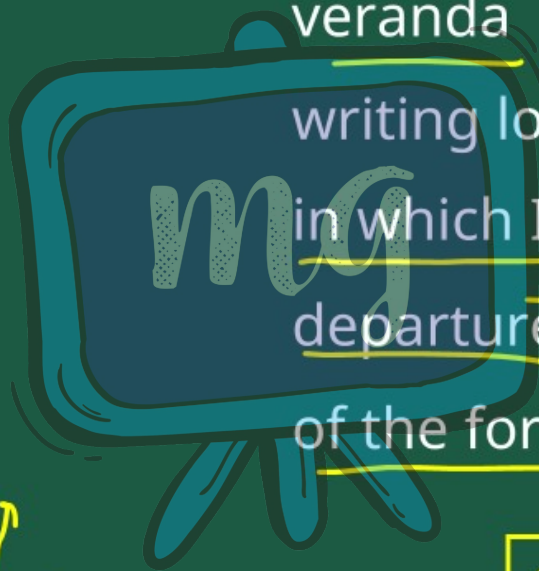
writing long letters

in which I scarcely mention the

departure

→ outer world

of the forest from the house.



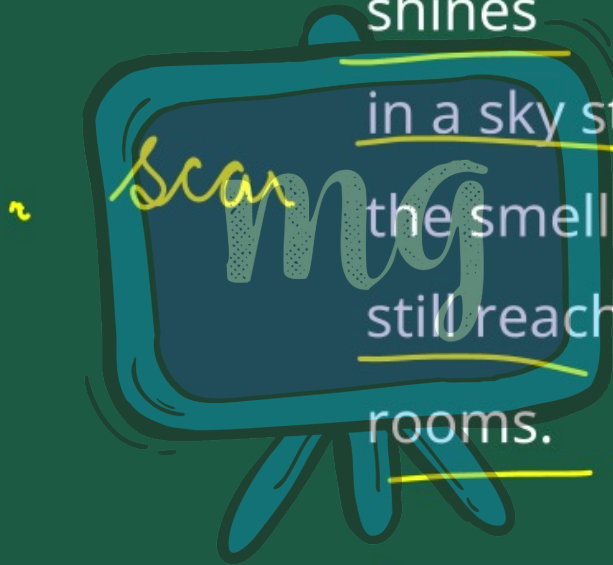
अ?

↓
↓
↓

Scarcely : hardly

The night is fresh, the [★]whole moon
shines
in a sky still open
the smell of leaves and lichen
still reaches like a voice into the
rooms.

freedom, opp,
equality.



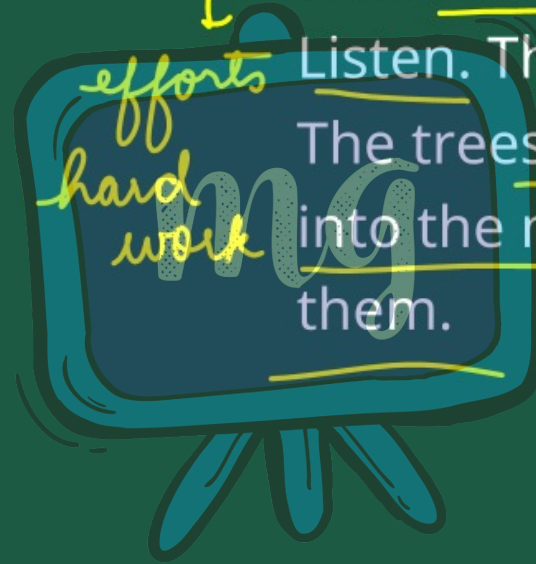
Lichen : algae



My head is full of whispers
which tomorrow will be silent.

Listen. The glass is breaking.

The trees are stumbling forward
into the night. Winds rush to meet
them.



Stumbling : to limp

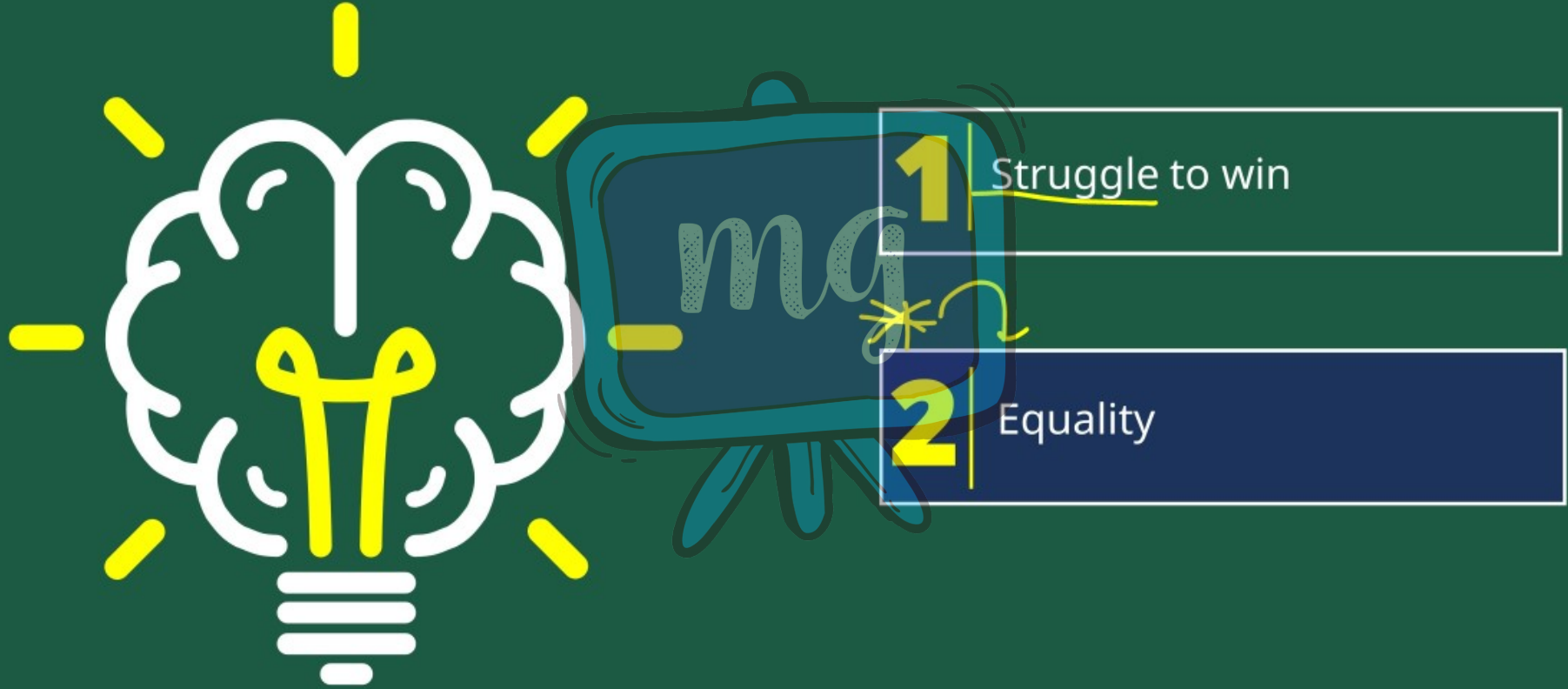
The moon is broken like a mirror,
its pieces **flash** now in the crown
of the tallest oak.

restrictions!



Flash : to shine

LEARNING OUTCOMES



ASSESSMENT



1

The poem talks about trees breaking out of confined spaces. This is a reference to women-

A

Shifting away from their domestic confines.

B

Seeking revenge for their age-old oppressions

C

Realizing the difference between friends and enemies.

D

Focusing on their family and home

ASSESSMENT



2

Choose the option that DOES NOT state the meaning of the underlined word.

'scarcely mention...'

- A Tactfully
- B Hardly
- C Barely
- D Only just

ASSESSMENT



3

What does the poetess not mention in the letters?

- A The arrival of the forest from the house.
- B The departure of the forest from the office.
- C The departure of the forest from the house.
- D None of the above