



# CLASS – 10

## SOCIAL SCIENCE

### Contemporary India-II

#### CH-4 : Agriculture

#### Part – 1

#### Types of Farming Practices in India

#### Pankaj Vaishnav

# OVERVIEW



1. Type of Farming Practices in India

2. Cropping Seasons

3. Major Crops

4. Other Food Crops & Horticulture Crops

5. Non-Food Crops

6. Technological & Institutional Reforms

# COMPETENCY BASED LEARNING



Significance of Agriculture in India's  
Economy and Society

# AGRICULTURE



# INDIA

- ✔ Agriculturally important country.
- ✔ 2/3<sup>rd</sup> population is engaged in agriculture activities.





✓  
▣ Primary Activity.

▣ **Produces**

✦ Food we consume.

✦ Raw material for various industries.

▣ Agricultural Products are also exported.

✓ ✓ ✓  
(Tea, Coffee, Spices etc.)

## TYPE OF FARMING

▣ Agriculture is an ancient economic activity in India.

▣ With time, cultivation methods changed significantly depending upon :

- ✦ Physical Environment ✓
- ✦ Technological Knowledge
- ✦ Socio - Cultural Practices

# TYPES OF FARMING PRACTICES IN INDIA

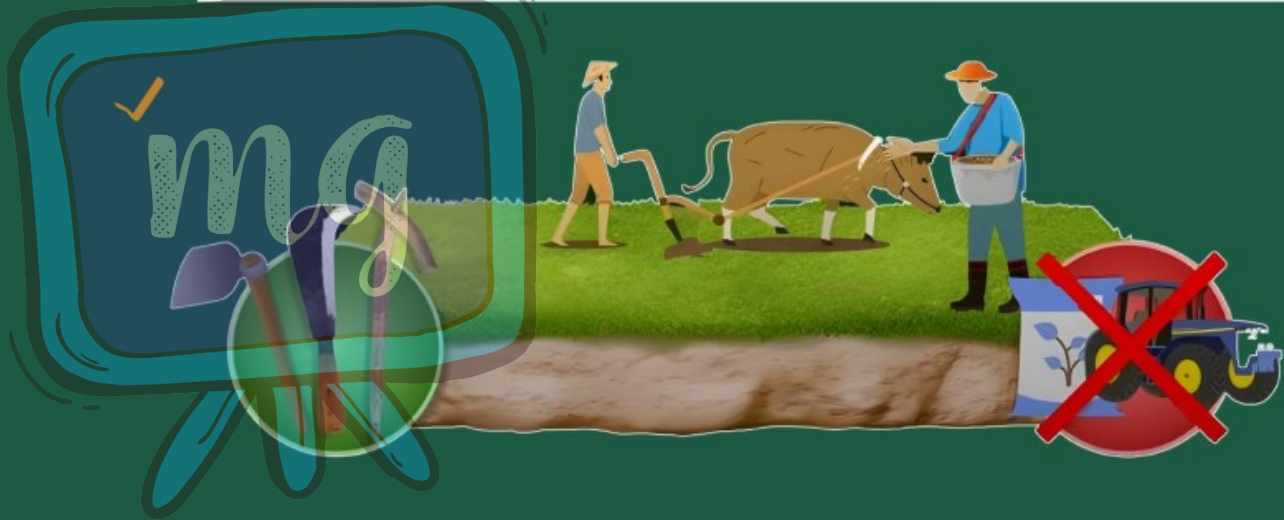
1. Primitive Subsistence Farming

2. Intensive Subsistence Farming

3. Commercial Farming

4. Plantation Farming

# 1. PRIMITIVE SUBSISTENCE FARMING



▮ Practiced on small patches of land  
with the help of :

✦ Primitive Tools

(Hoe, Dao, Digging Sticks etc.)

✦ Family / Community labor



## ↳ Depends upon

✦ Monsoon ✓

✦ Natural Fertility of Soil

✦ Suitability of Environmental  
Conditions to the Crop Grown



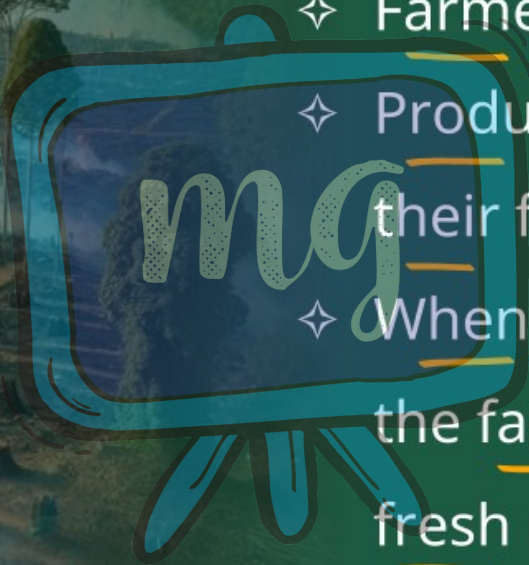


# 'SLASH AND BURN' AGRICULTURE



## 👉 SLASH AND BURN AGRICULTURE

- ✦ Farmers clear a patch of land.
- ✦ Produce food crops to sustain their family.
- ✦ When the soil fertility decreases, the farmers shift and clear a fresh patch of land for cultivation.



✦ Shifting helps nature to  
replenish the fertility of the soil  
through natural process.

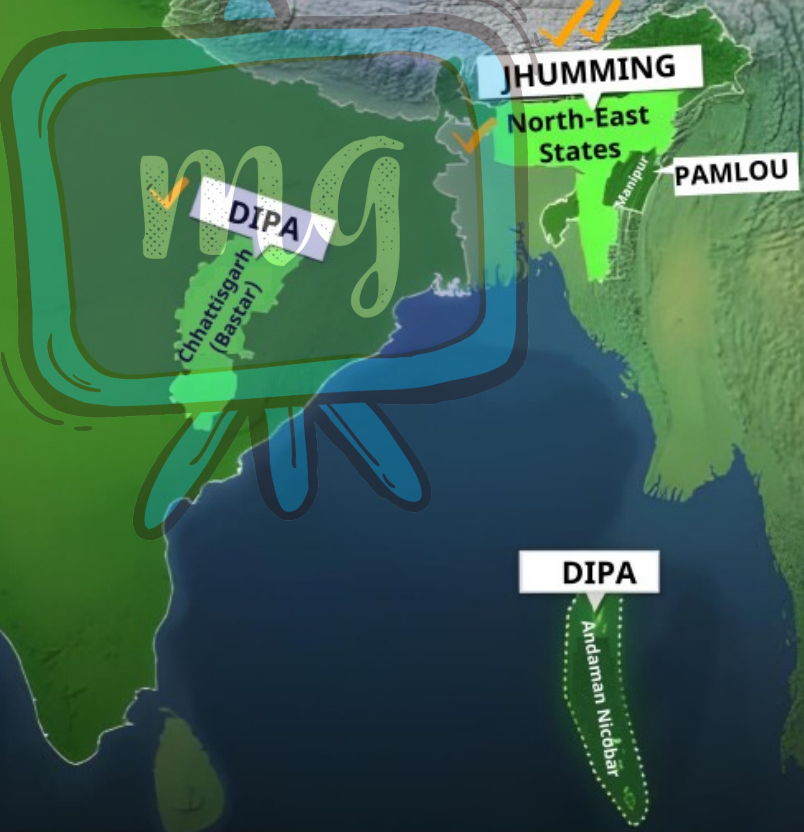
✦ Land productivity is low.

**Reason**

Farmers don't use fertilizers or  
other modern inputs.



# Different Names in Different Region





▶ In India, Primitive Form of Cultivation is known as :

- 
- ✦ Bewar/ Dahiya – Madhya Pradesh
  - ✦ Podu/ Penda – Andhra Pradesh
  - ✦ Kumari – Western Ghats
  - ✦ Khil – Himalayan Belt
  - ✦ Kuruwa – Jharkhand
  - ✦ Valre/ Waltre – Rajasthan (South-East)
  - ✦ Pama Dabi/ Koman/ Bringa – Odisha

2.

## INTENSIVE SUBSISTENCE FARMING



- ▮ Practiced in areas of high population pressure on land.

- ▮ Labor Intensive.

- ▮ **Higher Production**

  - ✦ High doses of biochemical inputs

  - ✦ More irrigation





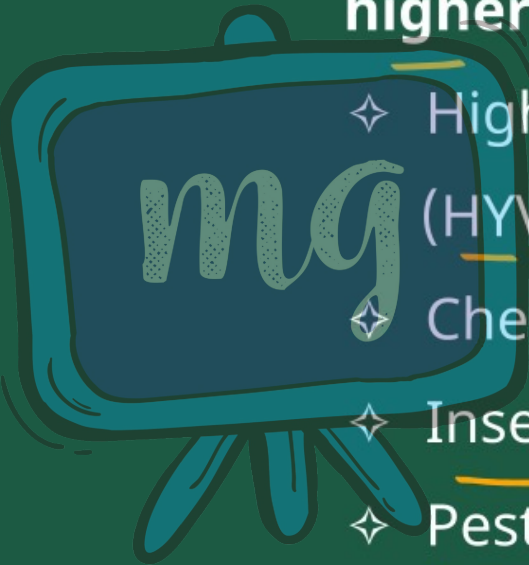
## ➤ 'RIGHT OF INHERITANCE'

- ✦ Division of land among successive generations.
- ✦ It makes land-holding size uneconomical.
- ✦ Farmers continue to take maximum output from the limited land in the absence of alternative source of livelihood.
- ✦ It shows the enormous pressure on agricultural land.

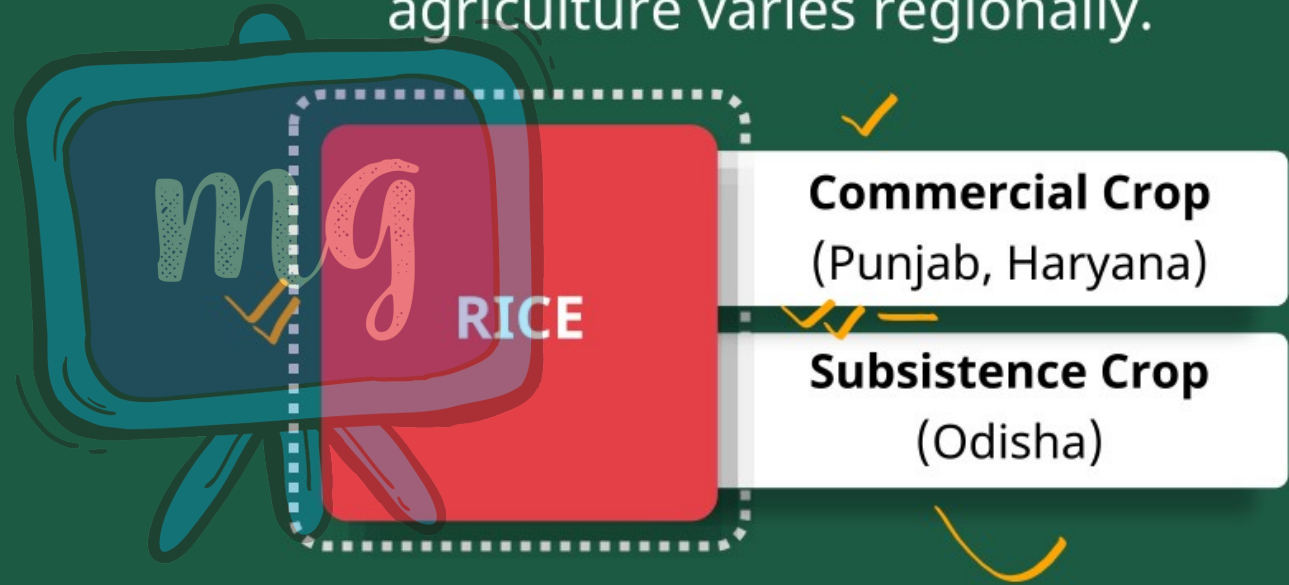
### 3. COMMERCIAL FARMING



➤ **Higher productivity using  
higher doses of modern inputs :**

- 
- ✦ High Yielding Variety Seeds  
(HYV Seeds)
  - ✦ Chemical Fertilizers
  - ✦ Insecticides
  - ✦ Pesticides

- ▮ Degree of commercialization of agriculture varies regionally.



## 4. PLANTATION FARMING

- ▣ Type of Commercial Farming.
- ▣ Single crop is grown on a large area.
- ▣ Has an interface of Agriculture & Industry.



- ▮ Cover large tracts of land.

- ▮ **Uses**

  - ✦ Capital Intensive Inputs

  - ✦ With the help of Migrant Laborers

- ▮ All produce is used as raw material.

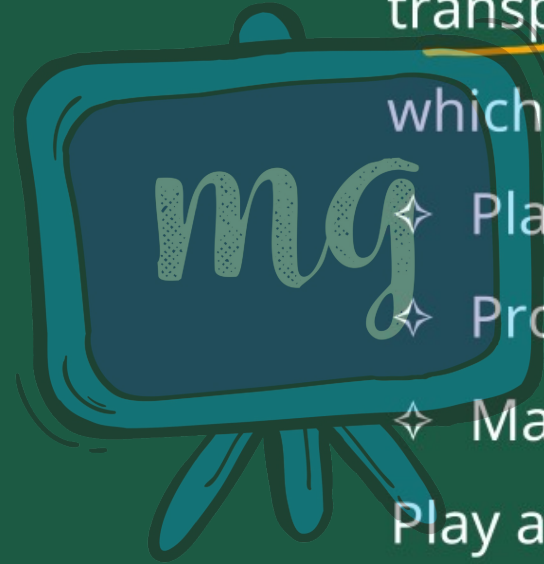
(In Different Industries)



# Important Plantation Crops in India



▮ A well-developed network of transport and communication, which connects :



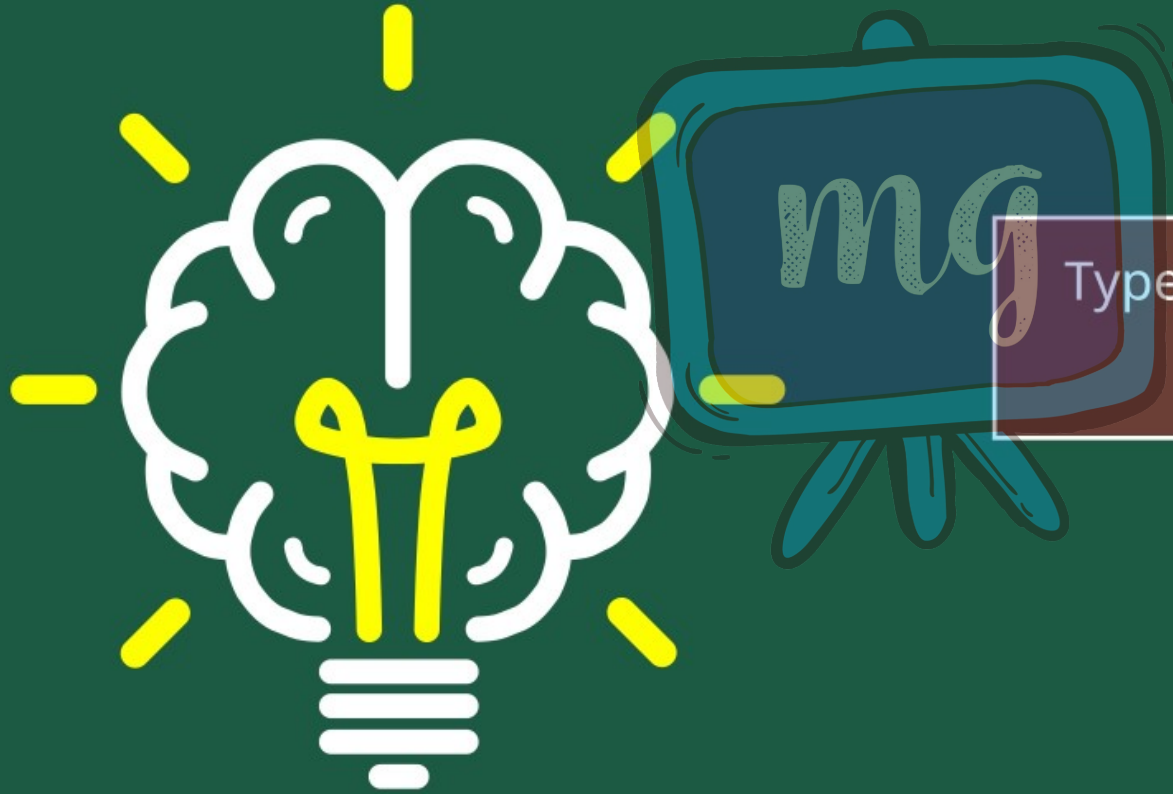
✦ Plantation Areas

✦ Processing Industries

✦ Markets

Play an important role in the development of plantation.

# LEARNING OUTCOMES



Types of Farming Practices in  
India

# ASSESSMENT

1

Reason of enormous pressure on agricultural land in India is: -

A

Land holding size is very small.

B

High density of population.

C

Small scale farmers do not have technology to have a lot of produce.

D

Farmers of less land holdings are not able to afford the right techniques of farming.

# ASSESSMENT



Fill in the blank by choosing the most appropriate option

Intensive Subsistence Farming-

Labour Intensive and Machine Based

Primitive Farming -

A Machine Based

B Traditional Methods Based

C Labour Intensive

D Modern

# ASSESSMENT



3 | Which type of farming has the use of higher doses of modern inputs (high yielding variety (HYV) seeds, chemical fertilizers, insecticides, pesticides etc.) ?

- A Primitive subsistence farming
- B Commercial farming
- C Jhumming
- D All of the above