



CLASS – 10

MATHEMATICS

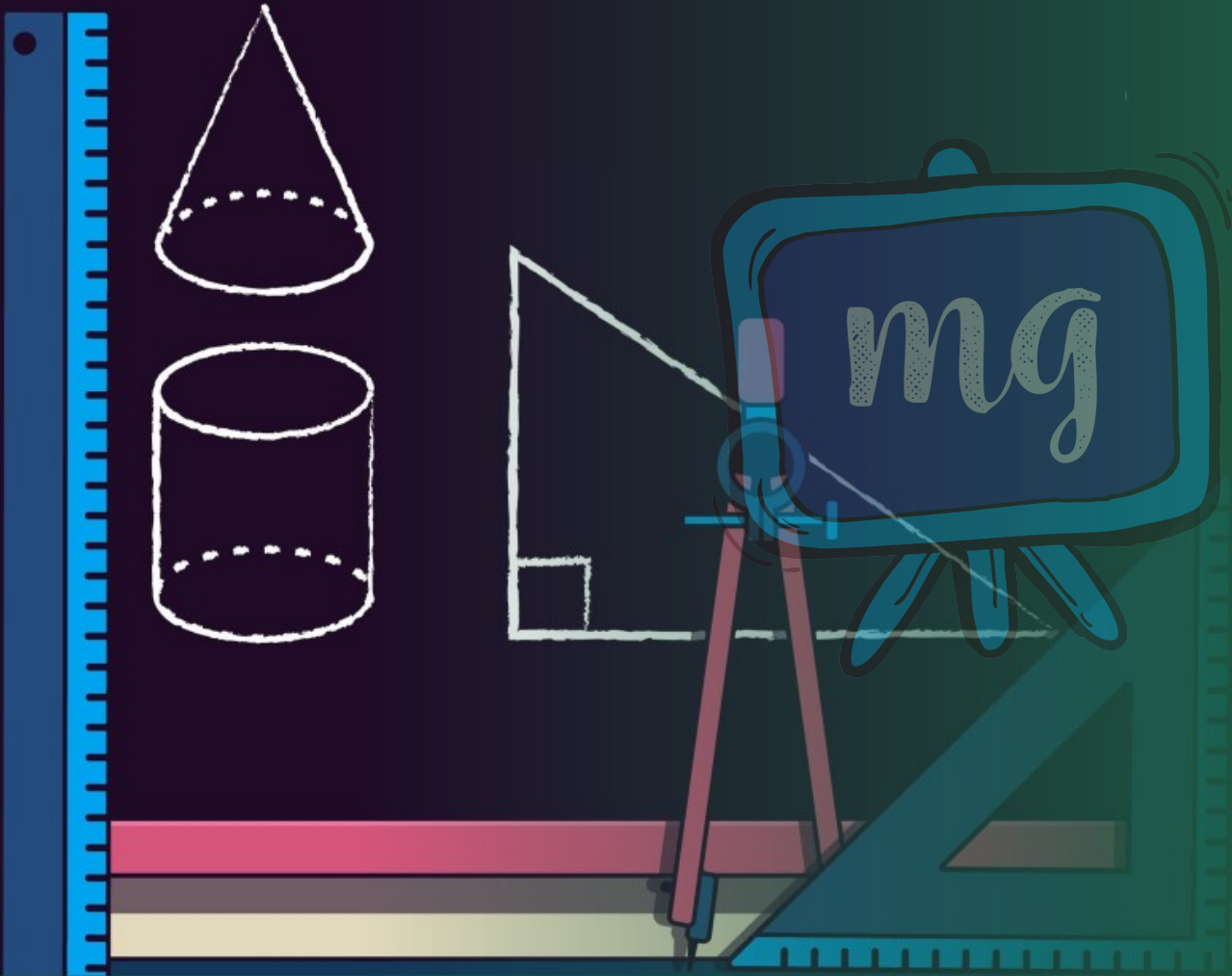
Chapter – 6

Triangles

Part – 2

Exercise 6.1

Shubham Tiwari

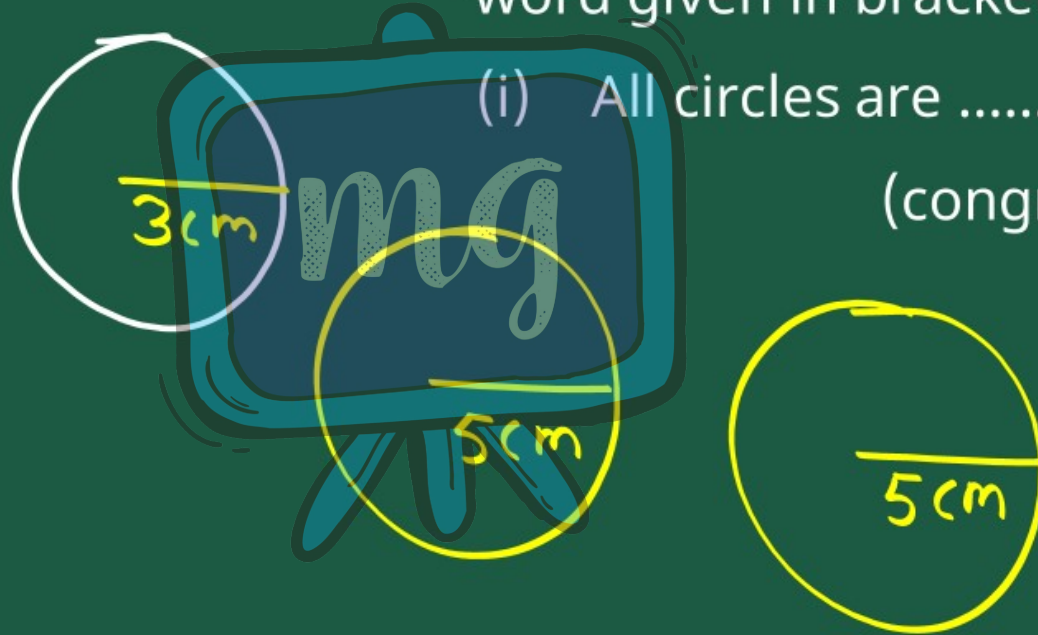


EXERCISE 6.1

1. Fill in the blanks using the correct word given in brackets :

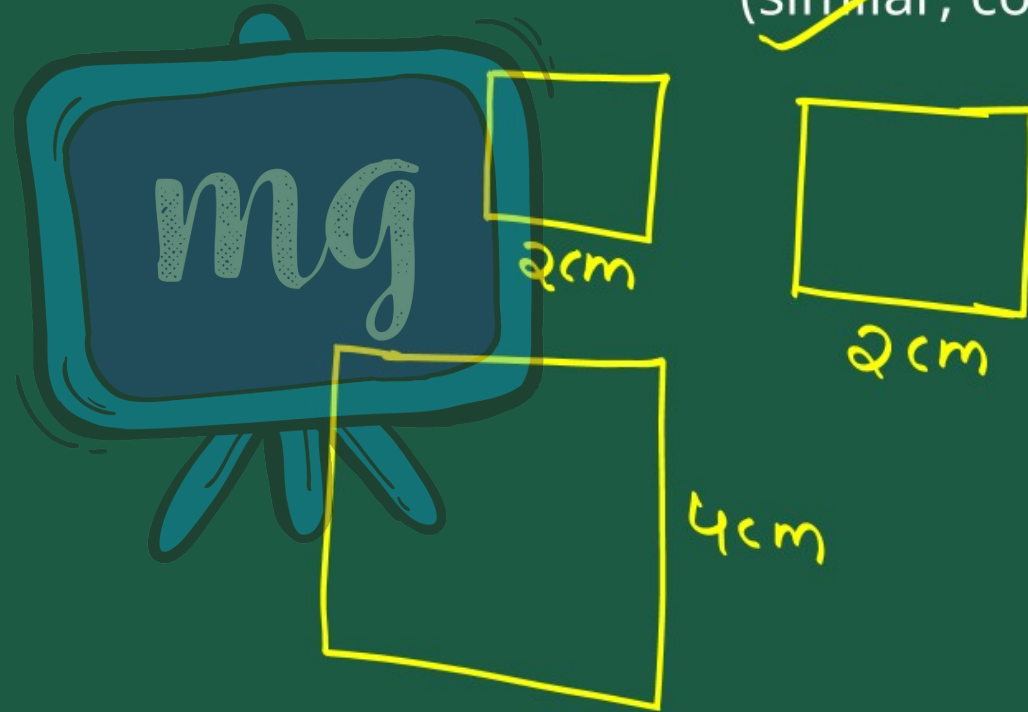
(i) All circles are

(congruent, similar) ✓



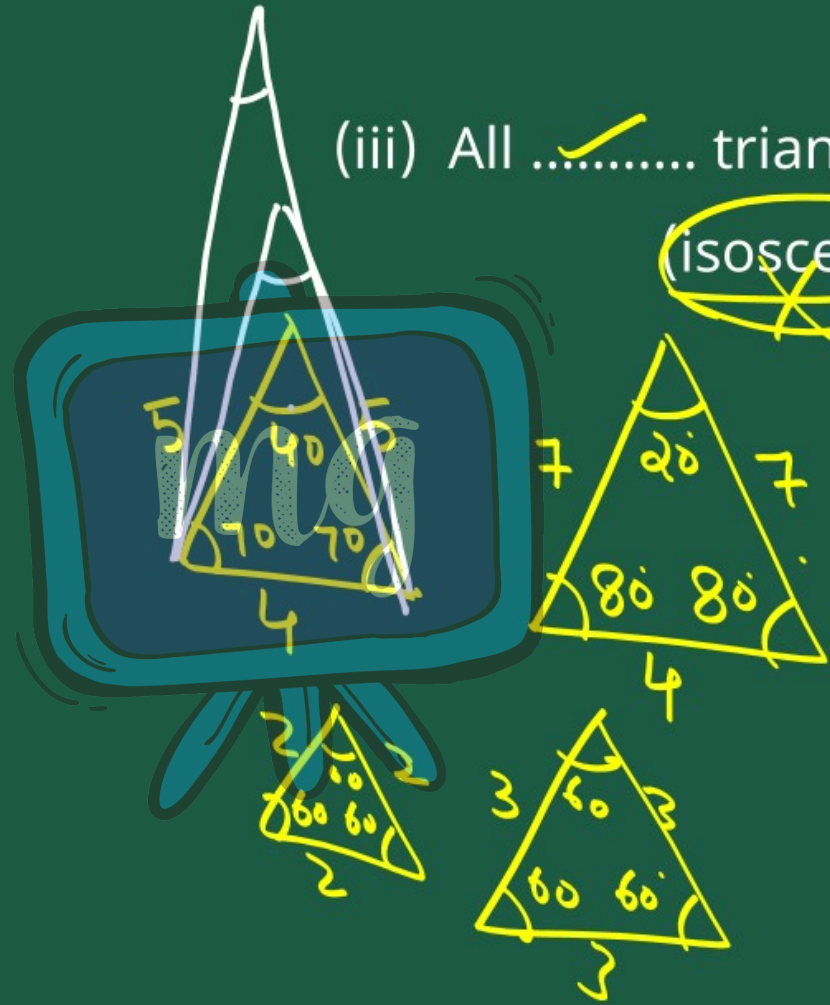
(ii) All squares are

(~~similar~~, congruent)



(iii) All triangles are similar.

(~~isosceles~~, equilateral)



(iv) Two polygons of the same number of sides are similar, if

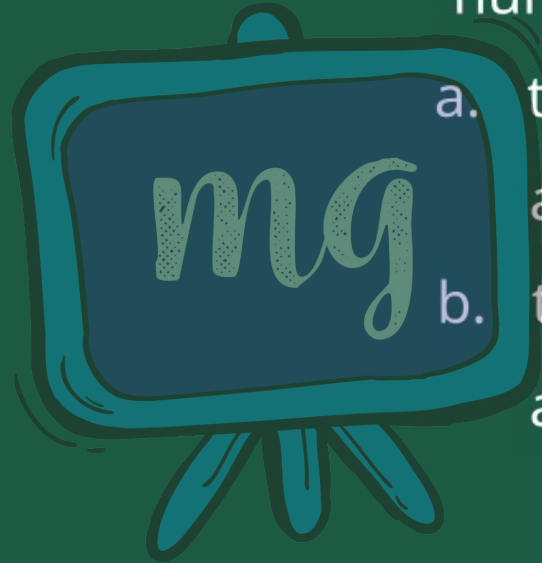
a. their corresponding angles

are *equal* and

b. their corresponding sides

are *proportional*

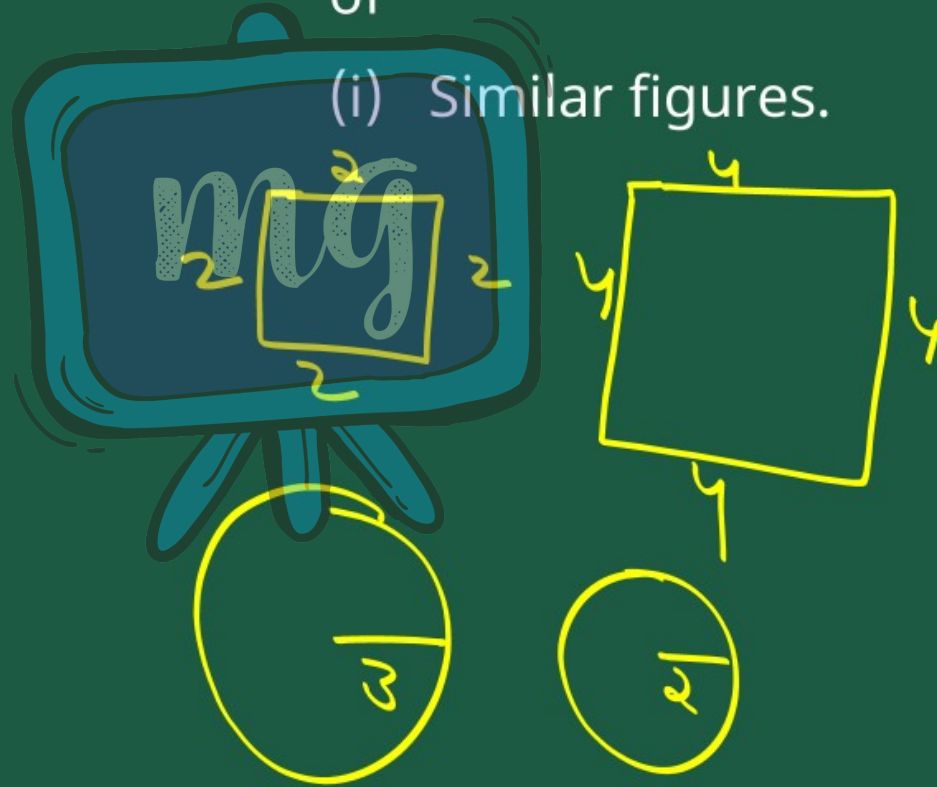
(equal, proportional)



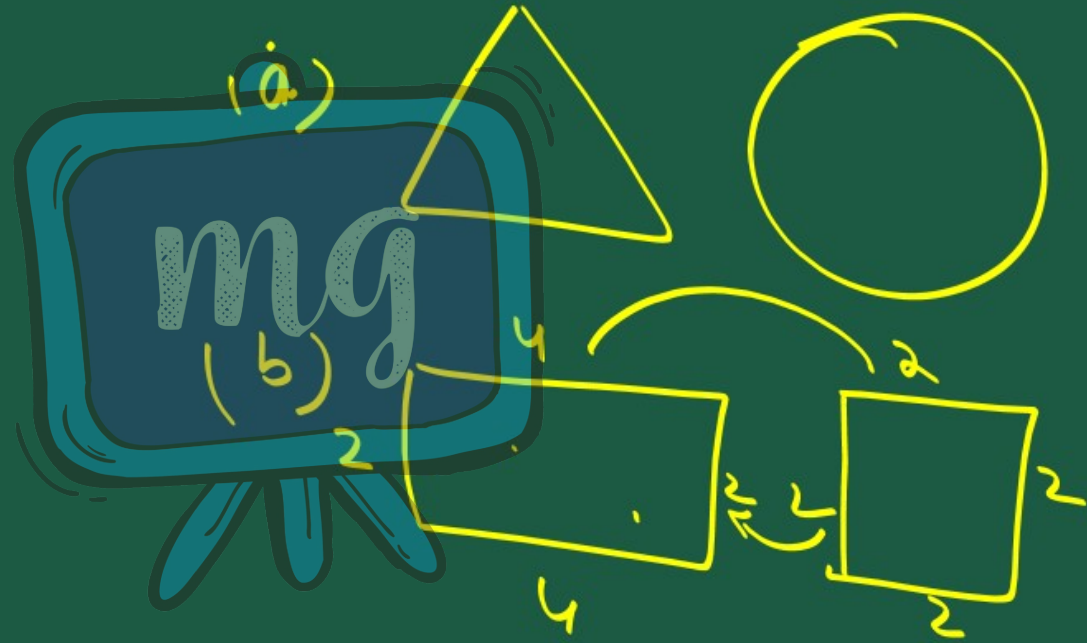
2. Give two different examples of pair

of

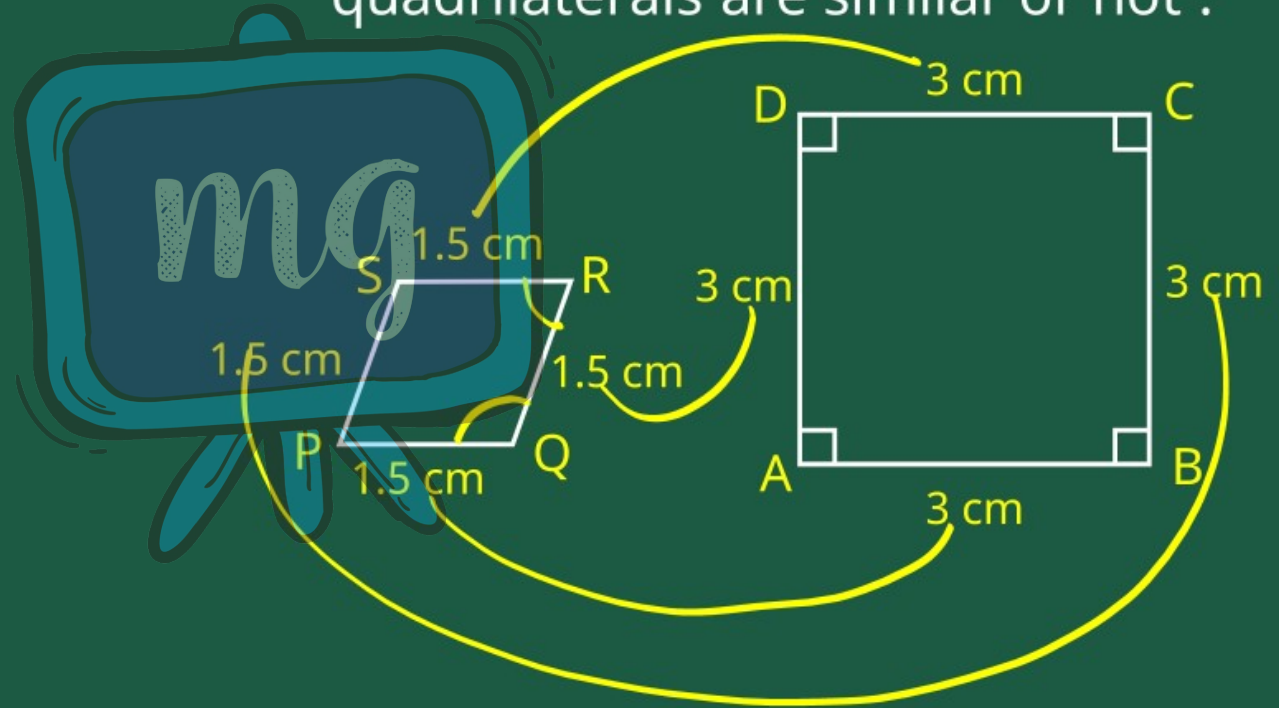
(i) Similar figures.



(ii) Non-similar figures



3. State whether the following quadrilaterals are similar or not :



$$\frac{AB}{PQ} = \frac{BC}{QR} = \frac{CD}{RS} = \frac{DA}{PS}$$

$$= \frac{3}{1.5} = \frac{2}{1}$$



In quadrilateral PQRS the angles are not right angles. Hence the figs are not similar.